



XT4



2019

Here's an entirely new concept.

What if you could slow down or speed up life
depending on what you desire?

You can do as much or as little as you wish.

You could make it up as you go along.

It's your choice. Your time.

And you can enjoy it however you want.

This new idea is fitted for whatever you decide,
wherever you're heading.

MEET THE FIRST-EVER 2019 XT4





NEW APPROACH. NEW DEPARTURE.

The first-ever 2019 XT4 is a fresh take on a crossover. Express your style, confidence and sense of sophistication without missing a beat.

Enjoy a drive so satisfying that will take you beyond the road. The XT4 has the power to transport you, without you ever wanting or needing to leave it.

Customize your XT4 with a Luxury, Premium Luxury or Sport model. All three choices showcase the exterior presence of an SUV, but in a compact and athletic style. The interior is loaded with tech and other conveniences to easily connect and support you and your world. Amazingly, all of this comfortably fits with lots of room to spare.



Your style. Your model. Introducing an all-new way to personalize your Cadillac. Choose from Luxury, Premium Luxury or Sport XT4 models. Each option offers unique styling and interior features, giving your vehicle an identity of its own. The Sport model is inspired by performance. The Premium Luxury model is dressed in confident yet contemporary style. The final touch is you.



Left: XT4 Premium Luxury in Shadow Metallic. Right: XT4 Sport in Twilight Blue Metallic. Both vehicles shown with available equipment.



A HEIGHTENED SENSE OF AWARENESS

The XT4 offers a wide array of driver-assistance technologies that can help you become more aware and provide you with the extra peace of mind you deserve on the road.



ENOUGH ROOM FOR ANY JOURNEY

With best-in-class rear legroom, there's a surprising amount of passenger space. Along with 60/40 flat-folding rear seats, there's plenty of room for a weekend escape.

XT4 Sport trim in Jet Black with Cinnamon accents. Shown with available equipment.

THE JOURNEY IS JUST AS THRILLING

The brand-new 2.0 L turbocharged engine produces 237 hp and 258 lb.-ft. of torque. It will feel like liftoff as soon as your foot touches the pedal.

This entirely new engine is also engineered with Active Fuel Management.

This technology automatically applies cylinder deactivation to not only make the drive enjoyable but efficient. The engine is paired with a 9-speed transmission and available twin-clutch AWD, making every drive stand out.



Left: The new 2.0 L Turbo engine. Above: XT4 Premium Luxury in Shadow Metallic. Shown with available equipment.

MODERN
SUV STYLE.
ATHLETIC
PROPORTIONS.



A bold, new design begins with a strong shoulder line that runs the full length of the side profile. This helps to emphasize the powerful yet compact proportions of the XT4. A long wheelbase with each wheel pushed to the farthest corner presents a stable and planted appearance. You can customize your XT4 with particular design cues to match your personal style and passions. Select from three different models — Luxury, Premium Luxury and Sport — with each offering its own unique exterior accents.

Chic and grand, the Premium Luxury exterior finishes are accentuated with a bright metallic-accented grille surrounded by Galvano-finished chrome, satin-aluminum roof rails and side-window moldings. Body-colour Illuminating Door Handles with satin-chrome accents guide the way. The front and rear lower fascia are finished with Medium Silver Metallic accents. Available 20-in. alloy wheels with a Diamond-Cut finish are a mark of distinction.



Inspired by performance, the Sport exterior finishes flash a gloss-black mesh grille framed by Galvano accents and gloss-black roof rails, window and front and rear lower fascia accents. The lens of the tail lamps is tinted in a neutral density, and available 20-in. twin five-spoke alloy wheels include a stunning Diamond-Cut finish.

All of the models feature signature LED headlamps and tail lamps. A bold design makes the headlamps bright and distinctive. The tail lamps mirror the style of the headlamps, but slice through the air with a light blade silhouette that's stylish and unmistakably Cadillac.

UP TO
103
EXTERIOR LED LIGHTS

40
DIFFERENT EXTERIOR
STYLE OPTIONS



An interior this inviting makes it difficult to leave. Discover a plethora of designs, comforts and conveniences inside the XT4. From stunning materials to stylish flexibility, sit back, relax, look sophisticated or take off. It's up to you how you'd like your interior to look. The hand-selected materials reflect a care and dedication to craftsmanship that are found in a variety of finishing touches, especially a new Cadillac cut-and-sewn process that spirals the stitching down the armrests on the doors. It's elegant and stunning.

Sophisticated yet indulgent, the Premium Luxury interior design features leather seating surfaces and Diamond-Cut Aluminum, Linear Galaxy High-Gloss Wood or Finesse Calico High-Gloss Wood.

If a bolder look beckons, you'll enjoy the Sport model motif with a sport steering wheel and pedals, two optional carbon fibre design accents or an authentic wood design. All bring a look as bold and sporty as the exterior.

39.5

INCHES OF BEST-IN-CLASS
REAR LEGROOM

6

AVAILABLE INTERIOR
DESIGN CHOICES





Guests and travel companions will enjoy best-in-class rear legroom. Everyone has plenty of space to stretch out, and all of their belongings can come along to boot. The XT4 has ample cargo room behind the rear seats. When you need even more cargo space, fold down the 60/40 rear seats. When folded down, the cargo floor and the folded seats create a flat surface for storage.

You'll be surprised and delighted to know that there are six storage areas in the front floor console alone. There's even a special place for your umbrella in both front doors and an adjustable phone holder in the console for your convenience.

Lastly, when your hands are full and you approach the rear of the XT4 with the key fob in your possession, simply apply a kicking motion underneath the left side of the rear fascia, and the available hands-free power liftgate with Cadillac logo projection will open for you.

60/40

FOLD-DOWN
REAR SEATS

6

STORAGE AREAS
IN FRONT FLOOR
CONSOLE

HIGH-TECH AT ITS SIMPLEST



The XT4 is smart in every way, with a tremendous number of technology features that allow you, your world and your vehicle to be more connected than ever. So you can sit back and enjoy the drive. A new rotary controller is one of four choices for operating the Cadillac user experience¹ interface. For example, to skip a track, you can say a voice command, use the touch-screen, press the rotary controller or press the button on the steering wheel.

Located front and centre, there are two rows of hard buttons for quick access to frequently used features, such as climate controls and auxiliary features. There's also an infotainment Home Button that serves as a convenient shortcut.

All things wireless are simple, too. Charge quickly with available Wireless Charging² capabilities or connect up to seven devices with the available built-in 4G LTE Wi-Fi[®] hotspot³ (data plan required) and let passengers stream their favourite entertainment.

1. Cadillac user experience functionality varies by model. Full functionality requires compatible Bluetooth[®] and smartphone. Some devices require USB connectivity. 2. The system wirelessly charges one PMA- or Qi- compatible mobile device. Some devices require an adaptor or back cover. To check for phone or device compatibility, see gmtotalconnect.ca. 3. Visit onstar.ca for vehicle availability, coverage maps, details and system limitations. Services and connectivity vary by model and conditions as well as geographical and technical restrictions. 4G LTE service available in select markets. Requires active connected vehicle services and a data plan to access the vehicle's built-in Wi-Fi hotspot. Accessory Power must be active to use the Wi-Fi hotspot. Data plans provided by AT&T or its local service provider. Credit card is required for purchase.

4G LTE

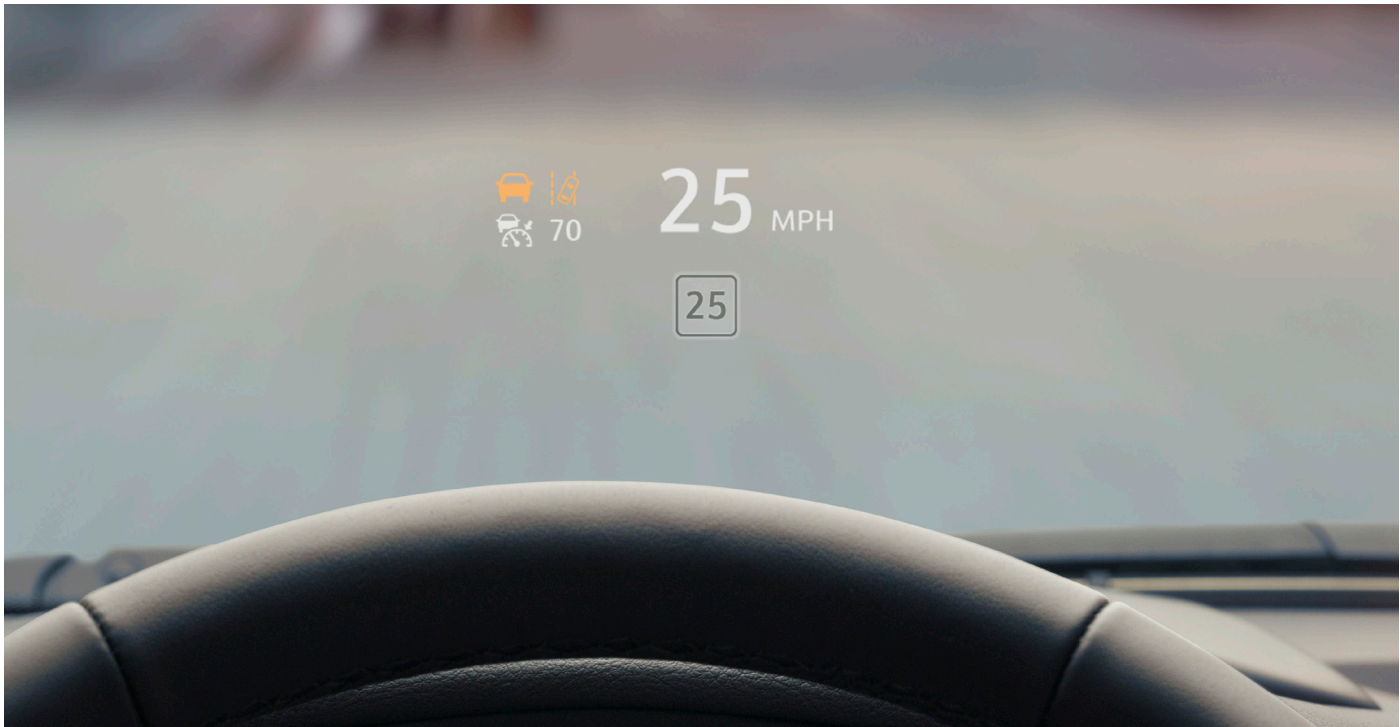
AVAILABLE BUILT-IN
4G LTE WI-FI[®] HOTSPOT³

UP TO
7

CONNECTED DEVICES CAN
ACCESS THE AVAILABLE
BUILT-IN WI-FI[®] HOTSPOT³



Left: The rotary controller. Top: The Cadillac user experience¹ and tactile controls. Bottom: Enjoying the available built-in 4G LTE Wi-Fi[®] hotspot.³

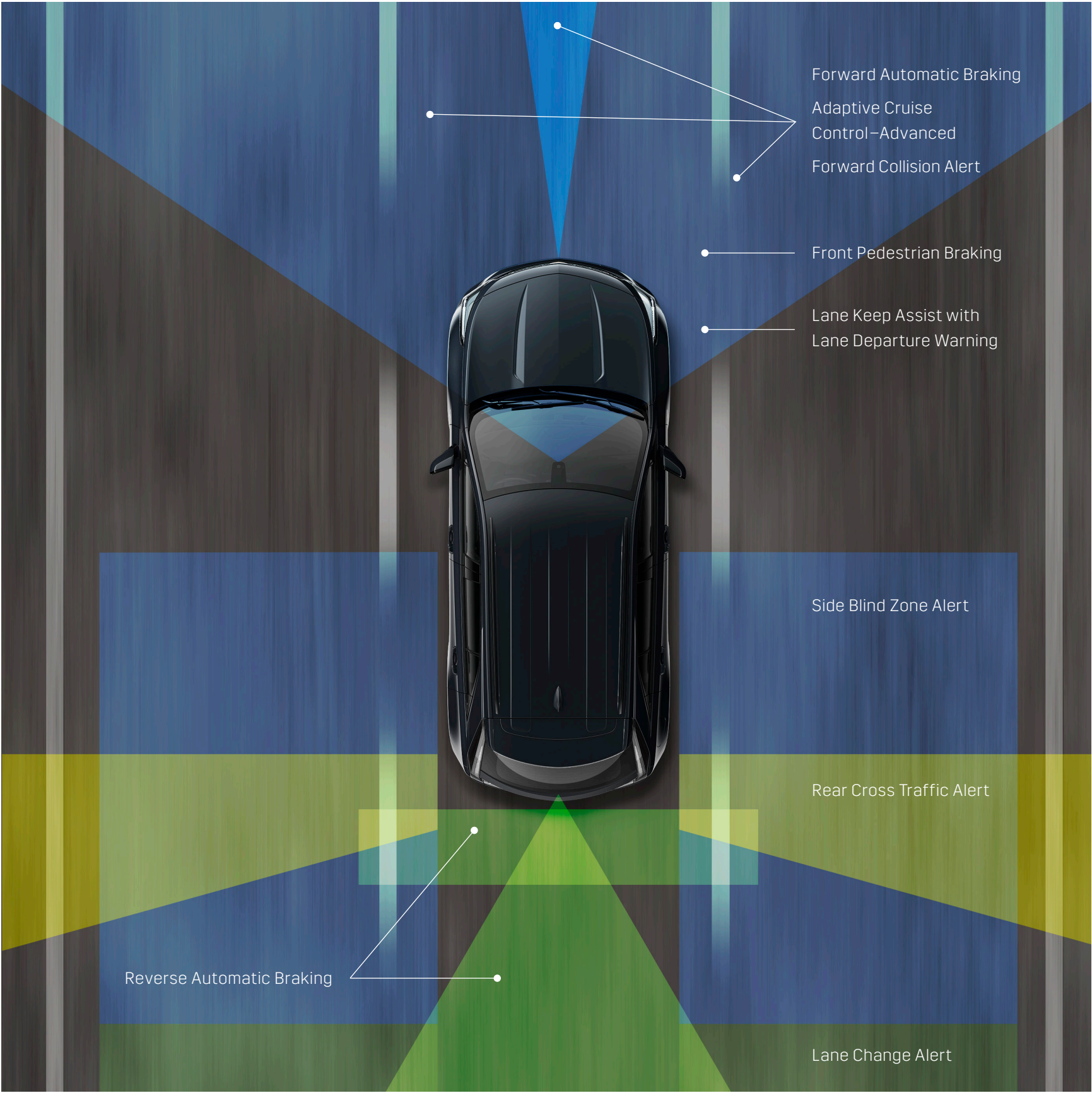


Cadillac's innovative available Rear Camera Mirror¹ allows you to use either a traditional inside mirror or a rearview camera mirror display that provides a wider, clearer view to check for traffic. The system uses a rear-facing camera that allows you to zoom, vertical tilt and adjust the brightness of the display. The camera lens also includes a washer to help keep the view clear.

Full-colour and with selectable modes, the available Head-Up Display (HUD) helps you keep your eyes on the road by projecting useful information onto the windshield. In the XT4, no quality is overlooked — even air quality. An available air ionizer helps reduce airborne contaminants in the cabin, such as dust, pollen and odors, for the comfort of all occupants.

¹ Safety or driver assistance features are no substitute for the driver's responsibility to operate the vehicle in a safe manner. The driver should remain attentive to traffic, surroundings and road conditions at all times. Visibility, weather, and road conditions may affect feature performance. Read the vehicle's owner's manual for more important feature limitations and information.

Top: Enhanced view with the available Rear Camera Mirror (A). Bottom: Traditional view with rearview mirror (B). Top right: Available Head-Up Display.



Select safety features shown.

SURROUNDED BY AVAILABLE SAFETY INNOVATIONS

GAIN PRECIOUS TIME

Up to certain speeds, available **Forward and Reverse Automatic Braking** can sense potential forward and reverse collisions and automatically engage the brakes if you haven't already done so, helping to reduce the crash impact.

TRULY FORWARD THINKING

Available **Forward Collision Alert** monitors traffic ahead, alerting you if a potential front-end collision is imminent. The available **Following Distance Indicator** shows the following time to the detected vehicle ahead (in seconds) in the Driver Information Centre (DIC).

AN INTELLIGENT WIPER

Available **Rainsense™ automatic wipers** engage when rain is detected, adjusting their speed to the rain's intensity. Whenever the wipers are activated, **Auto-Dry brakes** automatically position the brake pads closer to the rotors to sweep away moisture and help improve performance.

GRABS YOUR ATTENTION. SUBTLY.

Cadillac's available patented **Safety Alert Seat** sends a discreet pulse to the left, right or both sides of the driver's seat, indicating the direction of the threat—left, right or both.

TRAVEL THE STRAIGHT AND SMART

Using a camera to sense lane boundaries, available **Lane Keep Assist** can gently turn the steering wheel if the system anticipates the vehicle is leaving the lane unintentionally or without using your turn signal. Working in conjunction with the available **Safety Alert Seat**, available **Lane Departure Warning** shows a visual alert in the cluster and sends a warning pulse through the seat cushion when your vehicle crosses the detected lane marking.

AN ATTENTION-GRABBER

Available **Lane Change Alert** surveys the area well beyond the side blind zone and illuminates the side-mirror warning icon to alert you of a rapidly approaching vehicle. Available **Side Blind Zone Alert** monitors your blind zones, so if a moving vehicle is in the adjacent lane, it also illuminates the side-mirror icon. In both features, if you've activated your turn signal, the icon on the side mirror flashes to alert you.

SEE WHAT LIES BEHIND

The **HD Rear Vision Camera** automatically displays a live image of the area behind you on the **Cadillac user experience** screen. Guidelines on the image plot out your intended trajectory, helping you to see people and objects that might be in your path.

SET YOUR SPACE

Available **Adaptive Cruise Control-Advanced** employs radar technology to maintain a selected distance between you and the detected vehicle ahead while you steer.

BE ALERTED EVEN IN REVERSE

When backing out of a parking space, available **Rear Cross Traffic Alert** warns of oncoming traffic on either side of your vehicle with either an audible alert or a pulse to the available **Safety Alert Seat**.

A HIGHER LOOK AT WHAT SURROUNDS YOU

Available **HD Surround Vision** provides a bird's-eye view of the area immediately surrounding the vehicle when in low-speed Drive or Reverse. This view, projected onto the **Cadillac user experience** screen, helps increase your awareness during low-speed manoeuvring.

Safety or driver-assistance features are no substitute for the driver's responsibility to operate the vehicle in a safe manner. The driver should remain attentive to traffic, surroundings and road conditions at all times. Visibility, weather and road conditions may affect feature performance. Read the vehicle Owner's Manual for important feature limitations and information.

TURBOCHARGED POWER. TIGHT TURNING CONTROL.



At the heart of the XT4 is its powerplant. An all-new 2.0 L turbocharged engine provides quick and powerful acceleration, thanks to its twin-scroll turbocharger and impressive torque range. An available advanced twin-clutch All-Wheel-Drive system maximizes every thrill with impressive traction. The engine is paired with a 9-speed automatic transmission for a smooth and efficient ride. That means more time to enjoy open roads, new adventures and roadside memories.

Next-generation Electronic Precision Shift is a modern, convenient way to shift. A new design showcases a straight up-and-down gear selection for more intuitive operation. Paddle shifters nestled behind the steering wheel provide quick shifts with just a tap, for those who want a more engaging drive.

Selectable driving modes allow you to customize your driving preferences. Each mode provides a unique driving experience with changes that may include accelerator pedal mapping, transmission shift points, steering effort and available Active Sport Suspension performance.

258

LB.-FT. OF TORQUE

1500- 4000

IS THE RPM RANGE THE
2.0 L TURBO ENGINE
PROVIDES PEAK TORQUE

237 hp

2.0 L TURBOCHARGED ENGINE



Top left: Electronic Precision Shift. Above: XT4 Premium Luxury in Shadow Metallic. Shown with available equipment.

LUXURY

DRIVETRAIN

Engine 2.0 L Turbo, Sliding Cam, Active Fuel Management (AFM) cylinder deactivation with 237 hp @ 5000 rpm and 258 lb.-ft. of torque @ 1500-4000 rpm

Transmission 9-speed automatic with Electronic Precision Shift, steering wheel-mounted paddle shifters, engine Auto Stop/Start with customer disable switch

Drivetrain Front-Wheel Drive (FWD)

CHASSIS AND SUSPENSION

Brakes 4-wheel disc with anti-lock braking system (ABS); featuring Auto-Dry functionality and Intelligent Brake Assist

Driving Modes Driver-selectable, on-demand: Tour, Sport and Snow/Ice; AWD mode replaces Snow/Ice, if equipped

Electronic Stability Control System Includes Traction Control

Exhaust Dual stainless steel with fascia-integrated metallic outlet design

Parking Brake, Electronic

Space-Saver Spare Wheel and Tire

Steering Speed sensitive, variable assist electric power rack and pinion

Suspension 4-Wheel Independent MacPherson strut front; 5-link rear

EXTERIOR

Bodyside Molding, Lower With integrated dark finish

Capless Fueling System

Door Handles, Exterior Body-colour with satin-chrome accent

Fascia Accents, Lower With integrated dark finish

Lighting

LED headlamps with Automatic On/Off operation

Entry lighting: first-row door-mounted puddle lamps

Rear lighting: LED tail lamps and LED Centre High-Mounted Stop Lamp (CHMSL)

Mirrors, Outside Rearview Driver and passenger, power-adjustable, manual-folding and heated

Rear Window Wiper, Washer and Defroster

Wheels 18-in. 10-spoke alloy with Bright Silver finish (see foldout for more details); includes P235/60R18 all-season tires¹

Window Surround Moldings Satin-aluminum finish

INTERIOR

Adaptive Remote Start Activates heated/ventilated seats and heated steering wheel (if equipped), climate control system and rear defroster

Cold Weather Package

Includes front heated seats, rear outboard heated seats and heated steering wheel

Air Filtration System

Armrests Centre front with hidden storage bin; centre rear, foldable, with cupholders

Audio 7-speaker with auxiliary amplifier and Active Noise Cancellation (ANC)

Cadillac user experience² Information and media control system. Includes 8-in. diagonal high-resolution touch-screen, HD Radio and SiriusXM³ capability.

Climate Control Electronic, dual-zone automatic with second-row vents

Connectivity Bluetooth^{®4} recognizes up to 10 Bluetooth-enabled smartphones; 4 USB ports:⁴ 1 front-row Type A and 1 front-row Type C full-function and 2 second-row charge-only; available built-in 4G LTE Wi-Fi[®] hotspot⁵; Apple CarPlay^{®6} and Android Auto^{™7} compatibility

Connected Access⁸ Provides 10 years of standard connectivity. Current services include 10 years of standard connectivity at no additional charge and enables services such as Vehicle Diagnostics⁹ and Dealer Maintenance Notification.⁹

Console, Front Centre Includes 2 side storage pockets suitable for tablets, covered front storage bin with USB⁴ ports and accessory power outlet, 2 cupholders, armrest and smartphone storage

Cruise Control Electronic, with set and resume speed

Decor, Interior Aluminum metallized finish

Door Locks Power-programmable with lockout protection

Floor Mats Carpeted front and rear

Gauge Cluster Includes colour reconfigurable Driver Information Display

Glove Box Lockable

Keyless Access Includes 2 remote transmitters enabling Push-Button Start

Lighting Front footwell, overhead task, door panels and cargo area

Rear Vision Camera¹⁰, High Definition Automatically provides a rear view with grid lines indicating the vehicle's projected path when vehicle is shifted into Reverse

Retained Accessory Power Power windows, audio system, mirrors, UltraView sunroof (if equipped) and climate control

remain operational after ignition is switched off for 10 minutes or until a door is opened

Rotary Infotainment Controller Rotate and select console-mounted controller with dedicated buttons for commonly used functions

Seating

Front 8-way power driver and 6-way power passenger with 2-way power lumbar support

Rear 60/40 split flat-folding

Leatherette seating surfaces

Steering Column Telescopic and rake adjustable, manual

Steering Wheel Leather trimmed with fingertip controls for Cadillac user experience², audio, Bluetooth^{®4} phone interface and cruise control

Universal Home Remote 3-channel, programmable

Visors Driver and front passenger with illuminated vanity mirrors

Windows, Power With express-up/-down front, express-down rear, includes rear-passenger lockout and remote comfort opening

SAFETY AND SECURITY

Airbags¹¹ Dual-stage frontal, side-impact; knee and head-curtain for driver and front passenger; head-curtain for outboard rear passengers. Passenger Sensing System, front-passenger seat.

1-Month OnStar Safety & Security Plan¹² Coverage includes Automatic Crash Response, Stolen Vehicle Assistance and Roadside Assistance

Rear Park Assist¹⁰

Seat Belts Lap and shoulder belts for all positions with pretensioners for driver and front passenger

Teen Driver

Theft-Deterrent System Engine immobilizer audible content

Tire Pressure Monitoring System Does not monitor spare tire

AVAILABLE FEATURES

All-Wheel Drive Twin-clutch system

Trailer Package¹³ Trailer hitch receiver, 2-in. heavy-duty cooling; wire harness. Increases towing capacity to 3500 lb.

1. All-season tires may not satisfy winter tire requirements in all regions of the country. Tires specifically designed for severe winter conditions and marked with the "winter tire" symbol may be required during certain months or in certain regions. Contact your Provincial, Municipal or local road authority for information regarding which tires are required in your particular area. 2. Cadillac user experience functionality varies by model. Full functionality requires compatible Bluetooth[®] and smartphone. Some devices require USB connectivity. 3. Available in 10 Canadian provinces, 3 territories and the 48 contiguous United States. Subscription sold separately after trial period. If you decide to continue your service at the end of your trial subscription, the plan you choose will automatically renew and bill at then-current rates until you call 1-888-539-7474 to cancel. Other fees and taxes will apply. All fees and programming subject to change. See the Customer Agreement for complete terms at siriusxm.ca/terms. ©2018 Sirius XM Canada Inc. "SiriusXM," the SiriusXM logo, channel names and logos are trademarks of Sirius XM Radio Inc. and are used under license. SiriusXM Canada products, programming, services are subject to change. 4. Not compatible with all devices. 5. Visit onstar.ca for vehicle availability, coverage maps, details and system limitations. Services and connectivity vary by model and conditions as well as geographical and technical restrictions. 4G LTE service available in select markets. Requires active connected vehicle services and a data plan to access the vehicle's built-in Wi-Fi hotspot. Accessory Power must be active to use the Wi-Fi hotspot. Data plans provided by AT&T or its local service provider. Credit card is required for purchase. 6. Vehicle user interface is a product of Apple, and its terms and privacy statements apply. Requires compatible iPhone, and data plan rates apply. Apple and Apple CarPlay are trademarks of Apple Inc., registered in the U.S. and other countries. 7. Vehicle user interface is a product of Google, and its terms and privacy statements apply. Requires compatible smartphone, and data plan rates apply. Android and Android Auto are trademarks of Google LLC. 8. Limitations apply. Chevrolet, GMC, Buick and Cadillac vehicles may be eligible for standard connectivity for a limited time to access available connected vehicle services. See onstar.ca for details and further plan limitations. Connected Access does not include emergency or security services. Availability of Connected Access and any of its services is dependent on compatible 4G LTE wireless networks and is also subject to change. 9. Capabilities vary by model and service plan. Visit onstar.ca for vehicle availability. Message and data rates may apply. Requires active service, email address on file and enrollment in Vehicle Diagnostics. Not all issues will deliver alerts. On-Demand Diagnostics requires a paid service plan. 10. Safety or driver assistance features are no substitute for the driver's responsibility to operate the vehicle in a safe manner. The driver should remain attentive to traffic, surroundings and road conditions at all times. Visibility, weather, and road conditions may affect feature performance. Read the vehicle's owner's manual for more important feature limitations and information. 11. Always use safety belts and child restraints. Children are safer when properly secured in a rear seat in the appropriate child restraint. See the Owner's Manual for more safety information. 12. OnStar acts as a link to existing emergency service providers. Not all vehicles may transmit all crash data. Roadside service provided by Allstate Roadside Services, and limitations and restrictions apply. Stolen Vehicle Assistance requires armed factory installed theft-deterrent system and selection of notification communication preference(s). These services are intended to assist with vehicle recovery and do not prevent theft or protect against damage or loss. Additional messaging and data rates may apply. Services are subject to user terms and limitations, and vary by vehicle model. Visit onstar.ca for more details. 13. Before you buy a vehicle or use it for trailering, carefully review the trailering section of the Owner's Manual. The weight of passengers, cargo and options or accessories may reduce the amount you can tow. 14. At time of posting, detailed map coverage is available for most major urban areas of the United States and for certain metropolitan areas of Canada (Vancouver, Calgary, Edmonton, Winnipeg, Windsor, London, Toronto, Ottawa, Montreal, Quebec City and Halifax). Coverage is significantly limited outside these areas. 15. The system wirelessly charges one PMA- or Qi- compatible mobile device. Some devices require an adaptor or back cover. To check for phone or device compatibility, see gmttotalconnect.ca.

CADILLAC XT4

2019

PREMIUM LUXURY

Enjoy Luxury Features + these enhancements:

All-Wheel Drive Twin-clutch system

Bodyside Molding, Lower With Medium Silver Metallic finish

Cargo Security Cover Removable/stowable

Decor, Interior Genuine aluminum or wood trim

Door Handles, Exterior Illuminating body-colour with satin-chrome accents

Fascia Accents, Lower With Medium Silver Metallic finish

Leather Seating Surfaces

Liftgate Power remote

Lighting, Interior Ambient Instrument panel and door panels, front and rear

Front and Rear Park Assist¹⁰

Lane Change Alert With Side Blind Zone Alert¹⁰

Memory Package Driver seat, outside driver's mirror and power steering column (if equipped)

Mirror, Inside Rearview Auto-dimming

Mirror, Outside Rearview Power-folding, driver auto-dimming, heated

Rear Cross Traffic Alert¹⁰

Roof Rails Longitudinal roof with satin-aluminum finish

Safety Alert Seat⁹

Sill Plate, Cargo Area Aluminum-accented

Windshield Wipers Rainsense[™] automatic wipers

Wheels 18-in. 10-spoke alloy with Pearl Nickel finish (see foldout for more details); includes P235/60R18 all-season tires¹

AVAILABLE FEATURES

Bose Surround Sound System 13-speaker Bose Centerpoint Surround Sound includes auxiliary amplifier and Active Noise Cancellation (ANC)

Comfort and Convenience Package Includes hands-free liftgate, passenger 8-way power seat, driver and front-passenger 4-way power lumbar support, ventilation and massage

Driver Assist Package¹⁰ Includes Adaptive Cruise Control–Advanced and Forward and Reverse Automatic Braking

Driver Awareness Package¹⁰ Includes Forward Collision Alert, Following Distance Indicator, Lane Keep Assist with Lane Departure Warning, Front Pedestrian Braking, IntelliBeam headlamps and Low-speed Forward Automatic Braking

Enhanced Visibility Package¹⁰ Includes Rear Camera Mirror, HD Surround Vision, Automatic Parking Assist with Braking and integrated turn signals in outside rearview mirrors

Navigation¹⁴ With voice and text guidance

Technology Package Includes LED Front Cornering Lamps, LED front turn-signal lamps, Head-Up Display, 8-in. colour reconfigurable cluster, Wireless Charging¹⁴, power steering column and cabin air ionizer

Trailer Package¹³ Trailer hitch receiver, 2-inches; heavy-duty cooling; wire harness; increases towing capacity to 1587 kg

UltraView Sunroof Power, tilt-sliding with express-open/-close, power sunshade

Wheels 20-in. dynamic 9-spoke alloy with Diamond-Cut/Medium Android finish (see foldout for more details); includes P245/45R20 all-season tires¹

SPORT

Enjoy Luxury Features + these enhancements:

- All-Wheel Drive** Twin-glutch system
- Bodyside Molding, Lower** With gloss-black finish
- Cargo Security Cover** Removable/stowable
- Cornering Lamps, LED**
- Decor, Interior** Genuine carbon fibre or wood trim
- Door Handles** Body-colour
- Fascia Accents, Lower** With gloss-black finish
- Front Turn-Signal Lamps, LED**
- Grille** Gloss-black mesh
- Liftgate** Power remote
- Lighting, Interior Ambient** Instrument panel and door panels, front and rear
- Sport Pedals** With aluminum alloy accents
- Front and Rear Park Assist¹⁰**
- Lane Change Alert With Side Blind Zone Alert¹⁰**
- Mirror, Inside Rearview** Auto-dimming
- Mirror, Outside Rearview** Power-folding, driver auto-dimming, heated
- Rear Cross Traffic Alert¹⁰**
- Roof Rails** Longitudinal roof with gloss-black finish
- Safety Alert Seat¹⁰**
- Seats, Enhanced Adjustability** Power 4-way lumbar support and seatback bolster adjustment for driver and front passenger
- Steering Wheel, Sport** Thicker-diameter rim and sport leather grain
- Sill Plate, Cargo Area** Aluminum-accented
- Window Surround Moldings** With gloss-black finish
- Windshield Wipers** Rainsense[™] automatic wipers
- Wheels** 18-in. 10-spoke alloy with Diamond-Cut/Argent Metallic finish (see foldout for more details); includes P235/60R18 all-season tires¹

AVAILABLE FEATURES

- Active Sport Suspension** Continuous Damping Control (CDC) active chassis
- Bose Surround Sound Audio System** 13-speaker Bose Centerpoint Surround Sound includes auxiliary amplifier and Active Noise Cancellation (ANC)
- Comfort and Convenience Package** Includes leather seating surfaces, hands-free liftgate, passenger 8-way power seat, driver and front-passenger ventilation and massage
- Driver Assist Package¹⁰** Includes Adaptive Cruise Control–Advanced and Forward and Reverse Automatic Braking
- Driver Awareness Package¹⁰** Includes Forward Collision Alert, Following Distance Indicator, Lane Keep Assist with Lane Departure Warning, Front Pedestrian Braking, IntelliBeam headlamps and Low Speed Forward Automatic Braking
- Enhanced Visibility Package¹⁰** Includes Rear Camera Mirror, HD Surround Vision, Automatic Parking Assist with Braking and outside power-folding rearview mirrors with integrated turn signals
- Navigation¹⁴** With voice and text guidance
- Technology Package¹³** Includes Head-Up Display, 8-in. colour reconfigurable cluster, Wireless Charging¹⁵, power steering column and cabin air ionizer
- Trailer Package¹³** Trailer hitch receiver, 2-in.; heavy-duty cooling; wire harness; increases towing capacity to 3500 lbs
- UltraView Sunroof** Power, tilt-sliding with express-open/-close, power sunshade
- Wheels** 20-in. twin 5-spoke alloy with Diamond-Cut/Titan Satin finish (see foldout for more details); includes P245/45R20 all-season tires¹

AN IMPORTANT NOTE ABOUT ALTERATIONS AND WARRANTIES

Installations or alterations to the original equipment vehicle (or chassis) as distributed by General Motors are not covered by the General Motors New Vehicle Limited Warranty. The special body company, assembler, equipment installer or upfitter is solely responsible for warranties on the body or equipment and any alterations (or any effect of the alterations) to any of the parts, components, systems or assemblies installed by GM. General Motors is not responsible for the safety or quality of design, features, materials or workmanship of any alterations by such suppliers.

ENGINES

Cadillac products are equipped with engines produced by GM Powertrain or other suppliers to GM worldwide. The engines in Cadillac products may also be used in other GM makes and models.

ASSEMBLY

Cadillac vehicles and their components are assembled or produced by different operating units of General Motors, its subsidiaries or suppliers to GM worldwide. We sometimes find it necessary to produce Cadillac vehicles with different or differently sourced components than originally scheduled. Since some options may be unavailable when your vehicle is assembled, we suggest you verify that your vehicle includes the equipment you ordered and that, if there were changes, they are acceptable to you.

ONSTAR AND CADILLAC CONNECTED SERVICES

Connected vehicle services require a paid connected vehicle services plan or trial, connected hardware, vehicle electrical system (including battery), wireless service and GPS satellite signal to be available and operating for features to function properly. OnStar acts as a link to existing emergency service providers. Visit onstar.ca for coverage map, details and system limitations.

A NOTE ON CHILD SAFETY

Always use seat belts and the correct child restraint for your child’s age and size, even with airbags. Even in vehicles equipped with the Passenger Sensing System, children are safer when properly secured in a rear seat in the appropriate infant, child or booster seat. Never place a rear-facing infant restraint in the front seat of any vehicle equipped with an active frontal airbag. See the Owner’s Manual and the child safety seat instructions for more safety information.

TRAILERING AND OFF-ROAD DRIVING INFORMATION

Please go to canadacadillac.ca and carefully review the vehicle Owner’s Manual for important safety information about trailering or off-road driving in your vehicle.

IMPORTANT WORDS ABOUT THIS CATALOGUE

We have tried to make this catalogue comprehensive and factual. We reserve the right, however, to make changes at any time, without notice, in prices, colours, materials, equipment, specifications, models and availability. Specifications, dimensions, measurements, ratings and other numbers in this catalogue and other printed materials provided at the dealership or affixed to vehicles are approximations based on design and engineering drawings, prototypes and laboratory tests. Your vehicle may differ due to variations in manufacture and equipment. Since some information may have been updated since the time of printing, please check with your Cadillac dealer for complete details. Cadillac reserves the right to lengthen or shorten the model year for any product for any reason or to start and end model years at different times. Certain vehicle features may lose their usefulness over time due to obsolescence from technological changes. Unless otherwise noted, all claims based on GM Small-Lux SUV segment and latest available competitive information. Excludes other GM vehicles.

FLEET ORDERS

Some standard content may be deleted on fleet orders. See dealer for details.



SELECT XT4 DIMENSIONS

All measurements are in inches.

EXTERIOR

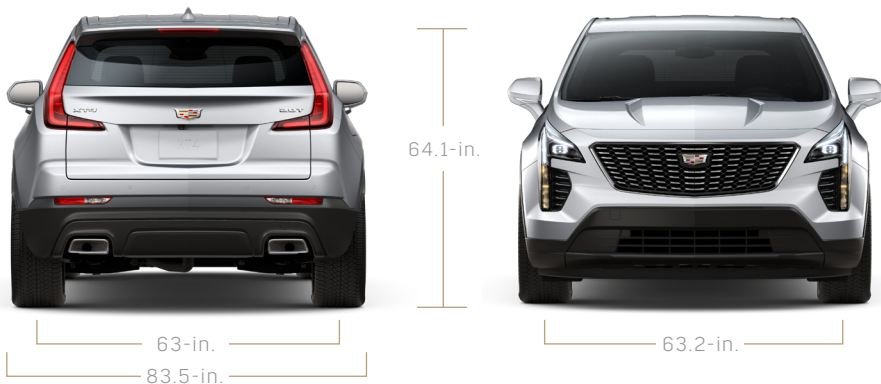
Wheelbase	109.4
Length	181.1
Max Width, Mirrors Extended	83.5
Height	64.1
Track Width, Front	63.2
Track Width, Rear	63.1

INTERIOR

	FRONT	REAR
Legroom	40.4	39.5
Headroom	39.4	38.3
Hiproom	54.5	49.8

CAPACITIES

Fuel (gal., approx.)	15.9 FWD 16.3 AWD
Cargo Volume ¹ (m³)	Rear Seat Up, 0.6 Seat Down, 1.4
Seating Capacity	2/3



©2018 General Motors. All rights reserved. The marks appearing in this catalog are the trademarks or service marks of GM, its subsidiaries, affiliates or licensors. Apple, iPhone and Apple CarPlay are trademarks of Apple, Inc., registered in the U.S. and other countries. Android is a trademark of Google LLC. Brembo is a registered trademark of Brembo. Bose, Centerpoint and AudioPilot are registered trademarks of Bose Corporation in the U.S. and other countries. SiriusXM Satellite Radio is a registered trademark of SiriusXM Radio, Inc. Wi-Fi is a registered trademark of Wi-Fi Alliance.®



LUXURY



18-IN. 10-SPOKE ALLOY WHEELS
WITH BRIGHT SILVER FINISH

PREMIUM LUXURY



18-IN. 10-SPOKE ALLOY WHEELS
WITH PEARL NICKEL FINISH



AVAILABLE 20-IN. DYNAMIC 9-SPOKE
ALLOY WHEELS WITH DIAMOND-CUT
/MEDIUM ANDROID FINISH

SPORT



18-IN. 10-SPOKE ALLOY WHEELS WITH
DIAMOND-CUT/ARGENT METALLIC FINISH



AVAILABLE 20-IN. TWIN 5-SPOKE ALLOY
WHEELS WITH DIAMOND-CUT/TITAN
SATIN FINISH

INTERIOR SELECTIONS

LUXURY

LIGHT PLATINUM LEATHERETTE SEATING SURFACES	JET BLACK ACCENTS	ALUMINUM METALLIZED TRIM
--	----------------------	--------------------------------

PREMIUM LUXURY

JET BLACK LEATHER SEATING SURFACES	JET BLACK ACCENTS	DIAMOND-CUT ALUMINUM TRIM
LIGHT PLATINUM LEATHER SEATING SURFACES	JET BLACK ACCENTS	LINEAR GALAXY HIGH-GLOSS WOOD TRIM
JET BLACK LEATHER SEATING SURFACES WITH MINI-PERFORATED INSERTS ¹	JET BLACK ACCENTS	DIAMOND-CUT ALUMINUM TRIM
LIGHT PLATINUM LEATHER SEATING SURFACES WITH MINI-PERFORATED INSERTS ¹	JET BLACK ACCENTS	LINEAR GALAXY HIGH-GLOSS WOOD TRIM
SEDONA LEATHER SEATING SURFACES WITH MINI-PERFORATED INSERTS ¹	JET BLACK ACCENTS	FINELINE CALICO HIGH-GLOSS WOOD TRIM

¹. Requires Comfort and Convenience Package.

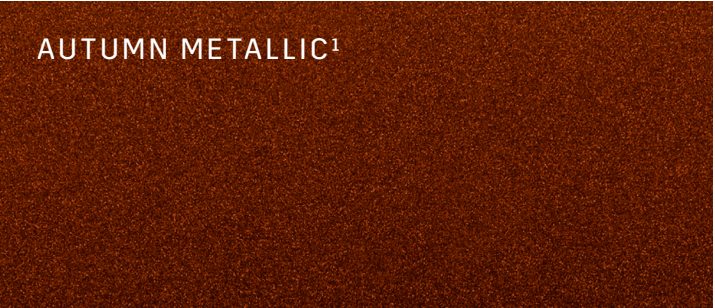
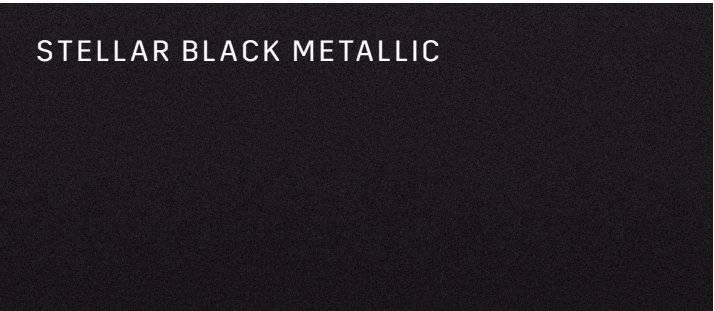
CADILLAC XT4

2019



SPORT

JET BLACK LEATHERETTE SEATING SURFACES	JET BLACK WITH CINNAMON ACCENTS	TWENTY-TWO HIGH-GLOSS CARBON FIBRE TRIM
LIGHT WHEAT LEATHERETTE SEATING SURFACES	JET BLACK WITH RED ACCENTS	MORELLO RED HIGH-GLOSS CARBON FIBRE TRIM
JET BLACK LEATHERETTE SEATING SURFACES WITH MINI-PERFORATED INSERTS ¹	JET BLACK WITH CINNAMON ACCENTS	TWENTY-TWO HIGH-GLOSS CARBON FIBRE TRIM
LIGHT WHEAT LEATHERETTE SEATING SURFACES WITH MINI-PERFORATED INSERTS ¹	JET BLACK WITH RED ACCENTS	MORELLO RED HIGH-GLOSS CARBON FIBRE TRIM
SEDONA LEATHER SEATING SURFACES WITH MINI-PERFORATED INSERTS ¹	JET BLACK ACCENTS	FINELINE CALICO HIGH-GLOSS WOOD TRIM



¹. Available at extra cost.



XT4